



Hydrajaws Verify App required. Download here.



**10Nm  
80Nm  
200Nm** **QUICK START GUIDE**



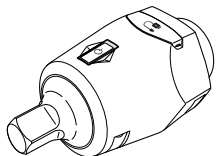
[www.hydrajaws.co.uk](http://www.hydrajaws.co.uk)

132-266 1.0



**CONTENTS**

- 1 x Verify Torque Device (10, 80 or 200Nm)
- Charging Cable (1m)



Quick guide



- 1. Link to User Manual 3
- 2. Usage; Download Verify App 3
- 3. Preparation 4
- 4. Turning the device ON/OFF 5
- 5. Connecting to the VERIFY App 6
- 6. Maintenance, specifications 7

This quick guide describes precautions and things to check before measurement, as well as how to use the device.

Please read this guide carefully before use.

This guide covers the 10Nm, 80Nm and 200Nm devices.



**Do not use with power tools.**

**LINK TO ONLINE MANUAL**

- A detailed user manual showing more App functionality is available at the following link:



[www.hydrajaws.co.uk/verify-manual](http://www.hydrajaws.co.uk/verify-manual)

**1. USAGE**

- Measurement of torque values
- Manage torque records

The following items are required to operate the Verify Torque device:

- A USB battery charger to charge the Verify Torque device.
- Tools such as drivers, socket wrenches, etc.

**2. DOWNLOAD VERIFY APP**

- A iOS or Android device is also required that has the Hydrajaws Verify App installed.
- Download links here:

[www.hydrajaws.co.uk/verify](http://www.hydrajaws.co.uk/verify)



**3. PREPARATION**

- Charging the Verify Torque unit

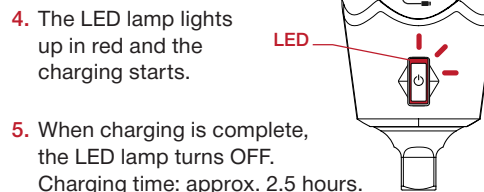
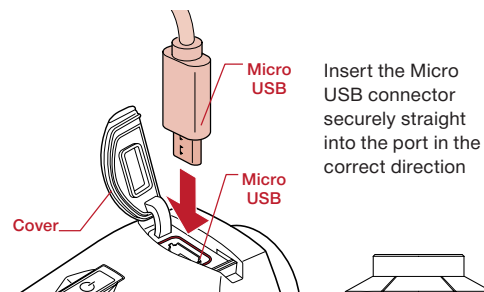
Charge the Verify Torque main unit before using it for the first time.

In addition, charge the Verify Torque main unit before use in the following cases:

- The remaining battery level is low or empty.
- Device has not been used for a long period.

Charge the product in an indoor environment where the ambient temperature is 0°C to 40°C.

- Charge the product using a commercially available USB battery charger with the supplied charging cable. Insert the USB connector securely straight into the AC adaptor in the correct direction.
- Open the charge cover on the Verify Torque.
- Insert the Micro USB connector securely straight into the port in the correct direction.



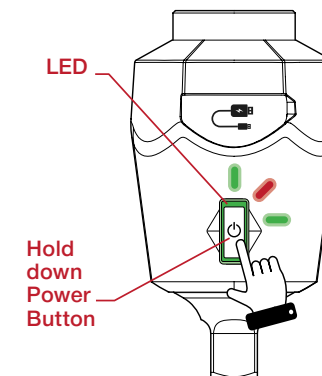
- The LED lamp lights up in red and the charging starts.
- When charging is complete, the LED lamp turns OFF. Charging time: approx. 2.5 hours.
- Unplug the AC adaptor from the outlet.
- Unplug the charging cable from the Verify Torque main unit and the AC adaptor.
- Close the cover of the Verify Torque main unit.

**4. TURNING THE POWER ON/OFF**

- Turning ON the power

Hold down the power button for 2 seconds and then release it.

The LED lamp first lights up in green, and then blinks in red and green alternately.

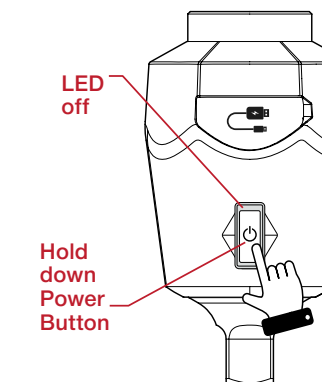


The unit will automatically enter pairing mode for 120 seconds after the power is turned on.

- Turning the power OFF

Hold down the power button for 2 seconds and then release it.

The LED lamp turns red and then turns OFF.



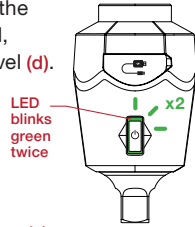
The power is automatically turned OFF after 5 minutes of inactivity.

## 5. CONNECTING TO THE VERIFY APP AND PERFORMING A QUICK TEST

### ■ Pair the device to the Verify app

1. Ensure Bluetooth® is activated on the mobile or tablet that you want to pair with. Refer to the instruction manual of the mobile device.
2. Launch the Verify App.
3. Turn ON the power of the Verify Torque device as described in section 4.
4. Select **Torque Test (a)** on the home screen.
5. Select the **red Bluetooth icon (b)** in the **Schedule For Torque** screen that follows.
6. Select **Verify Torque (c)** in **Connect a Torque**.

7. The icon changes when the Torque unit is connected, displaying the battery level (d).

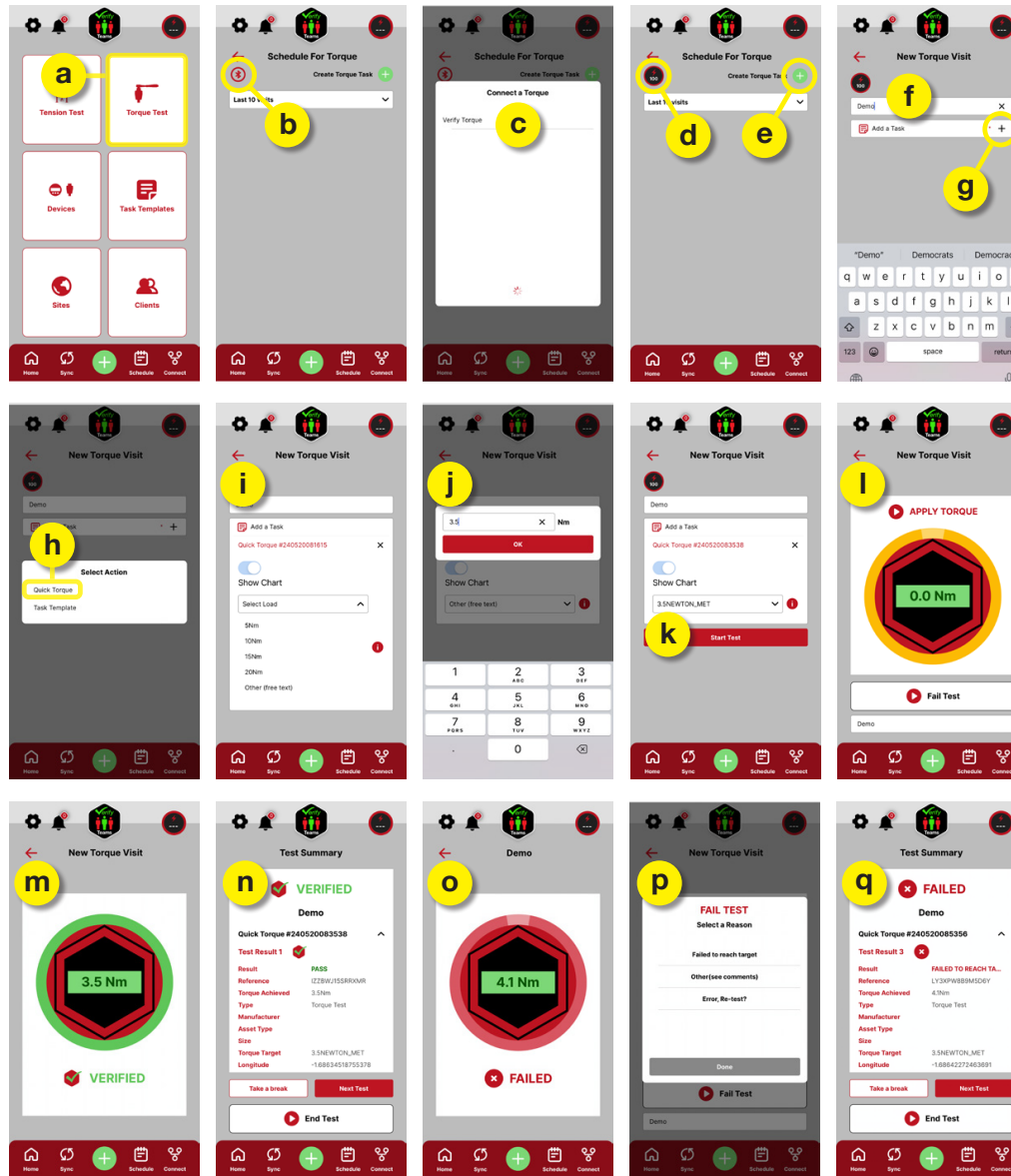


Upon connection to the app, the LED lamp blinks twice in green.

8. Then select the green '+  
Create Torque Test button (e).
9. Enter a **name** for the test (f) and select **Add a Task (g)**.

10. Choose **Quick Torque (h)**.
11. Choose a target Nm (i) from the list or enter your own Nm target (j).
12. Select **Start Test (k)**.
13. A **yellow ring (l)** indicates that the test is active. Apply the torque load steadily and monitor the value in the app. An audio cue increases in pitch on approaching target load.
14. A **green ring (m)** indicates that the target load is successfully reached.

15. The **VERIFIED (n)** screen summarises the information of the current test.
16. A **red ring (o)** indicates that the load is over the target.
17. On the **FAIL TEST (p)** dialog box, the current test can be failed or re-tried.
18. The **FAIL TEST (q)** screen summarises the error information of the current test.



### LINK TO ONLINE MANUAL

- A detailed user manual detailing more VERIFY App functionality, including setting up templates and accessing the dashboard is available here:

[www.hydrajaws.co.uk/verify-manual](http://www.hydrajaws.co.uk/verify-manual)



## 6. MAINTENANCE

### ■ Usage environment

For accurate measurements, use the product in an environment where the temperature is between -5°C and 40°C and the humidity is 90% or less.

Do not place or store the product in a location with excessive dirt, dust etc.

### ■ Maintenance

Do not use thinner, benzene, alcohol, or any cleaner that contains organic solvents which could result in surface damage or deformation.

For maintenance and cleaning of the Verify Torque main unit, use a soft dry cloth to wipe any dirt off the device.

### ■ Disposal

This product is subject to the EU WEEE Directive. Follow the laws and regulations that apply in your country and local jurisdiction for proper disposal.

## SPECIFICATIONS

	10 Nm	80 Nm	200 Nm
■ Verify Torque (Part #)	010-004	010-005	010-006
■ Drive size:	¼" (6.3mm)	¾/8" (9.5mm)	½" (12.7mm)
■ Torque range:	2-10 Nm	8-80 Nm	40-200 Nm
■ Display increment:	0.1 Nm	0.1 Nm	0.1 Nm
■ Diameter:	42 mm	42 mm	42 mm
■ Height:	71.5 mm	75 mm	83 mm
■ Weight:	130 g	160 g	210 g
■ Measurement accuracy: ±4%			
■ Power: Rechargeable Li-Po battery, comes with Micro USB charging cable – a charger is not supplied			
■ Requires the Hydrajaws Verify App to operate, communicates with the app via Bluetooth®			



Conformity standards (Europe)	
Health Protection	EN 62479:2010
Radio	EN 300 328 V2.1.1 (Tx/Rx Radiated Spurious Emissions only)
Emission	EN 301 489-1 V2.1.1 / EN 301 489-17 V3.1.1 EN 55014-1:2006+A1:2009+A2:2011 EN 61000-3-2:2014 / EN 61000-3-3:2013
Immunity	EN 301 489-1 V2.1.1 / EN 301 489-17 V3.1.1 EN 55014-2:1997+A1:2001+A2:2008 (Category VI)
Conformity standards (USA)	
FCC 47 CFR Part 15, Subpart B	
ANSI C63.4-2014	
Conformity standards (Canada)	
ICES-003(issue 6):2016	
ICES-Gen(issue 1):2018	
ANSI C63.4-2014	