

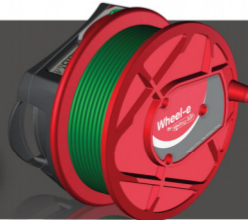
QUICKLY READY AND INTUITIVE USE :

- Connect the wire of Wheel-e to equipotentiality reference,
- connect a probe to Wheel-e,
 - touch protective conductors with the probe,
 - beeps if the resistance is OK, $\leq 2 \Omega$ * (or $\leq 1 \Omega$ *),
 - doesn't if it is greater than 2Ω * (or 1Ω *) (the value is displayed).

* Two versions are existing, a 2-ohm version and an 1-ohm version.

Wheel-e

An innovating current in installation testing



An innovating current in installation testing

SAFETY :

- 600 V~ CAT III.
- 300 V~ CAT IV.
- IP2X.
- Class 2.
- Voltage warning.
- Removable 0.5 A fuse.
- 1 mm² PVC 2-jacket wire.
- Protection verified by French accredited external laboratory (LCIE).

MEASURING :

- Self-reversing of the polarities (compliant with EN 61557-4).
- Measuring range 0.00 Ω to 20.0 Ω (resolution 0.01 Ω).
- Current 200 mA DC (compliant with EN 61557-4).
- Voltage between 4 V and 6 V (compliant with EN 61557-4).
- Provided with verification certificate.
- Accuracy $\pm 10\% \pm 0.02 \Omega$ from 0.50 Ω to 2.00 Ω .

ERGONOMICS AND ABILITIES :

- One single button for all the functions.
- Blue / red backlight to test at first glance if OK or not.
- Loud beep to test if OK or not without looking at the LCD.
- Mute the beep not to disturb some areas (offices).
- About 10000 checkings with the 4 AA batteries.
- Calibrate yourself periodically.
- Hanging banana plug, the wire can't unreel unintentionally.
- Replace yourself the wire if worn just by unscrewing the flange.
- Compensate at 0 Ω for the resistances of the accessories.
- 30 meter-long wire to operate far from the equipotentiality reference.
- Wear it on the waist to free your hands and take care of your neck and back.
- "AUX" socket to test unplugged appliances while keeping connected to the reference.

Wheel-e
the hybrid reel-tester.

Keep your **hands free** when testing the **continuity** and measuring the resistance of protective conductors and equipotential bonding.



Blue backlight and beep when OK. (You can mute the beep.)



Red backlight and no beep when not OK.



Warning if hazardous or unusual voltage is detected.

Test unplugged appliances while keeping connected to equipotentiality reference.



Wheel-e is made in France and adds to the **Electro-PJP's** range of safety accessories like telescopic poles, probes, leads, clips, socket adaptors (...) to test equipotential bonding on sockets, lights, metal frames, heaters, plugged and unplugged appliances (...)
(The Wheel-e design and patent are registered.)



Choose your Wheel-e :
1-ohm ? Or 2-ohm version ?

And contact us at :

testoon.com
The measurement website
99, rue Beranger
92320 Chatillon - France
Tel : +33 (0) 1 71 16 17 00
Fax : +33 (0) 1 71 16 17 03
www.testoon.com



Fichier « Promo Wheel-e - EN » 23/09/2013. Indice C. Electro-PJP. Information in this publication supersedes all earlier versions. Specifications subject to change without notice. © 2013 Electro PJP. All rights reserved. Cette édition remplace toutes les précédentes. Les données sont sujettes à modifications sans avertissement. © 2013 Electro-PJP. Tous droits réservés.