

C.A 1510



FRANÇAIS
ENGLISH
DEUTSCH
ITALIANO
ESPAÑOL

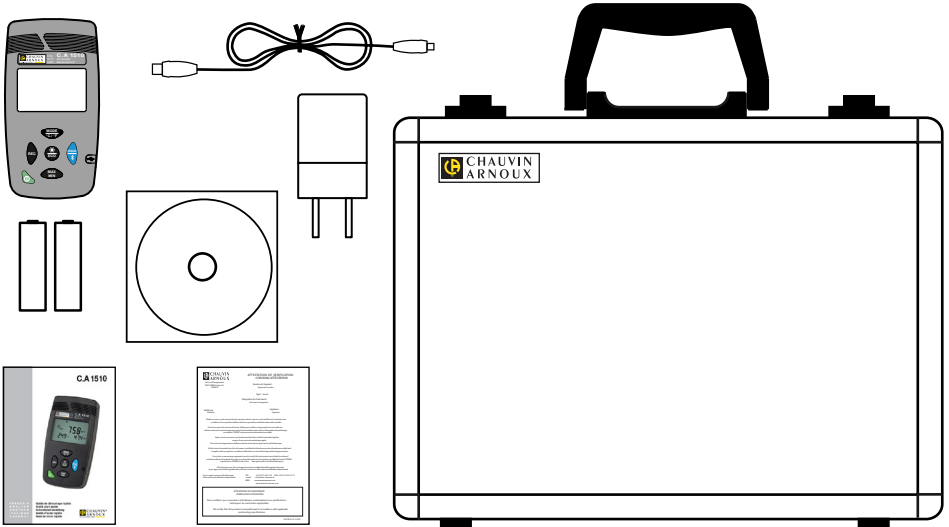
Guide de démarrage rapide
Quick start guide
Schnellstart-Anleitung
Guida d'avvio rapido
Guía de inicio rápido

 **CHAUVIN®
ARNOUX**
CHAUVIN ARNOUX GROUP

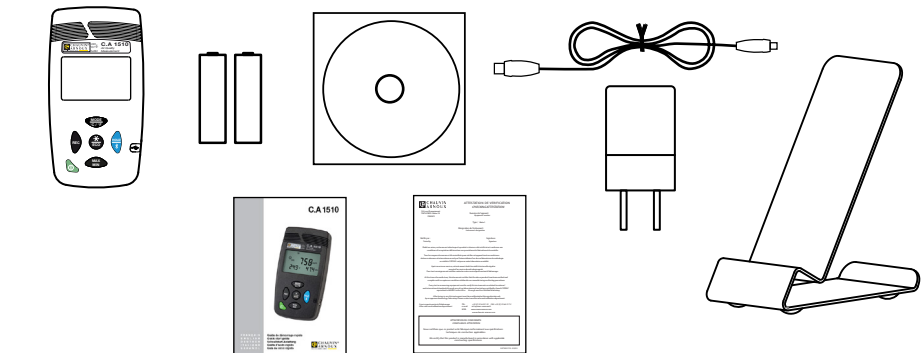
<i>Français</i>	3
<i>English</i>	7
<i>Deutsch</i>	11
<i>Italiano</i>	15
<i>Español</i>	19

ÉTAT DE LIVRAISON

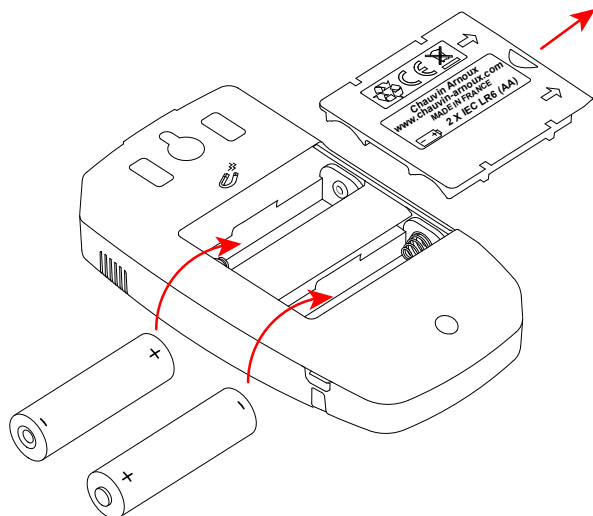
Appareil gris anthracite



ou appareil blanc



MISE EN PLACE DES PILES



FONCTIONNEMENT DES TOUCHES

- **Appui court** : Rétro-éclairage
- **Appui long** : Économie d'énergie

- **Appui court** : Mode 1D et 3D
- **Appui long** : Changement de l'unité de température

Appui long : Enregistrement manuel (M_REC)

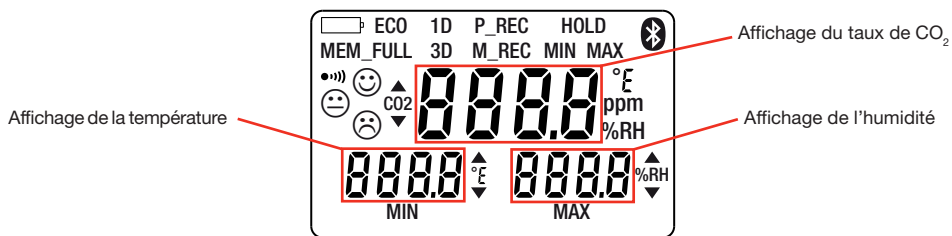
- **Appui court** : Maintien de l'affichage
- **Appui long** : Activation de la liaison Bluetooth

Marche / Arrêt

Fonction MIN MAX

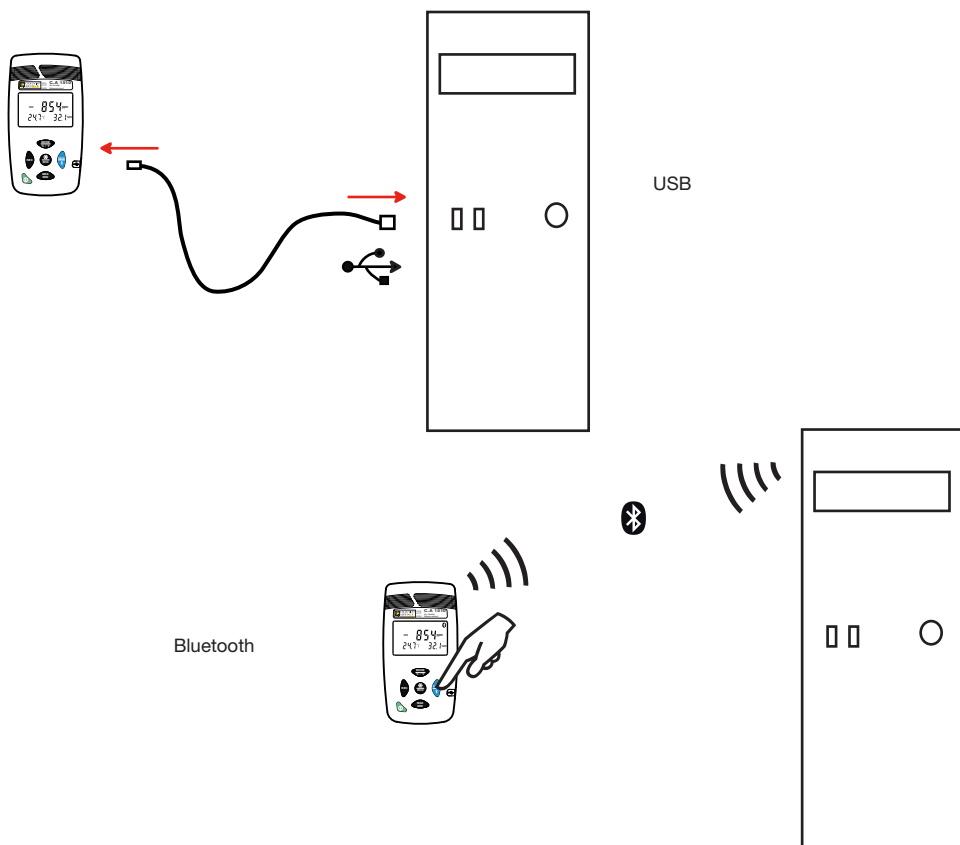
- **Appui court** : Entrée dans la fonction MIN MAX et affichage des différents extrêmes
- **Appui long** : Sortie de la fonction MIN MAX

AFFICHEUR

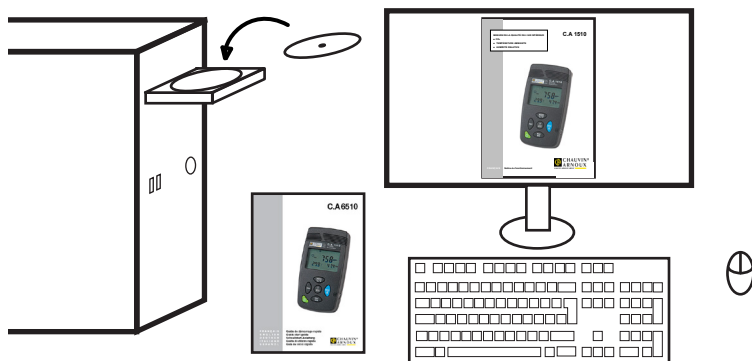


Symboles	Désignation
MEM_FULL	Mémoire pleine
1D	Surveillance du taux de CO ₂
3D	Surveillance du franchissement des seuils de zone de confort en CO ₂ , température et humidité
MAX	Valeur maximale
MIN	Valeur minimale
ECO	Mode de fonctionnement en économie d'énergie
P_REC	Enregistrement programmé Clignotant : en attente de démarrer l'enregistrement Fixe : en cours d'enregistrement
M_REC	Enregistrement manuel
HOLD	Maintien de l'affichage
MIN MAX	Fonction MIN MAX : détection des valeurs minimales et maximales
ppm	Unité de la concentration de CO ₂ dans l'air en parties par million
•••))	Buzzer actif
Bluetooth	Bluetooth Clignotant : en attente de connexion Fixe : connecté
🔋	Clignotant : Indicateur de piles faibles Fixe : Indicateur d'une alimentation extérieure par branchement de l'adaptateur secteur ou de la connexion USB.
▲	Dépassement de seuil haut
▼	Dépassement de seuil bas
😊 😐 😞	Indication de la qualité de l'air et de la zone de confort hygrothermique

CONNEXION DE L'APPAREIL À UN ORDINATEUR

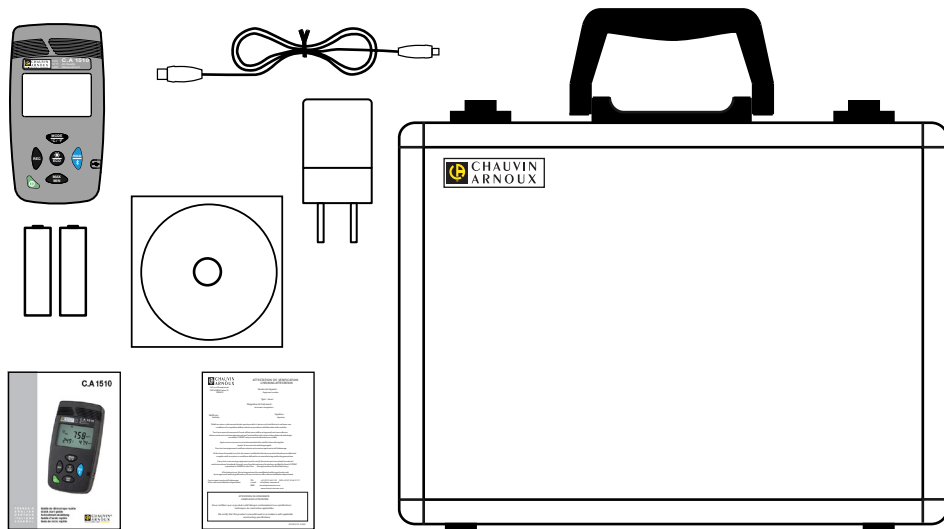


NOTICE DE FONCTIONNEMENT

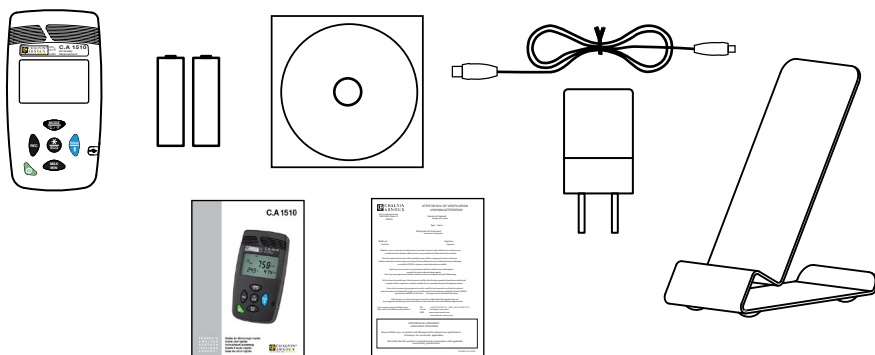


DELIVERY CONDITION

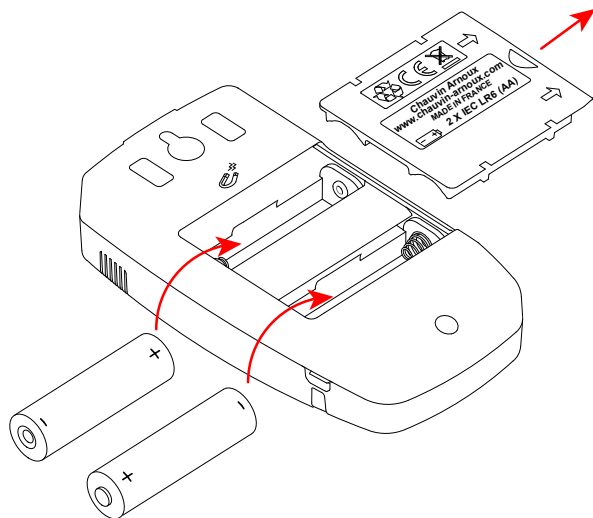
Anthracite grey



or white device



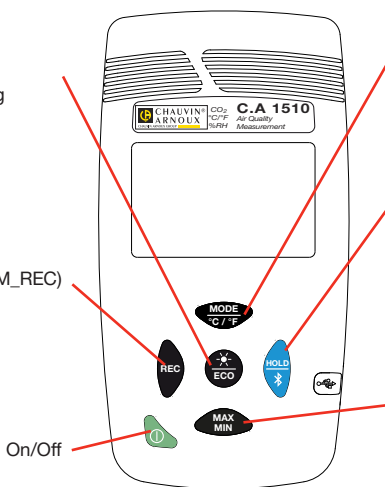
INSERTING THE BATTERIES



USING THE KEYS

- **Short press:** Back-lighting
- **Long press:** Energy-saving

Long press: Manual recording (M_REC)



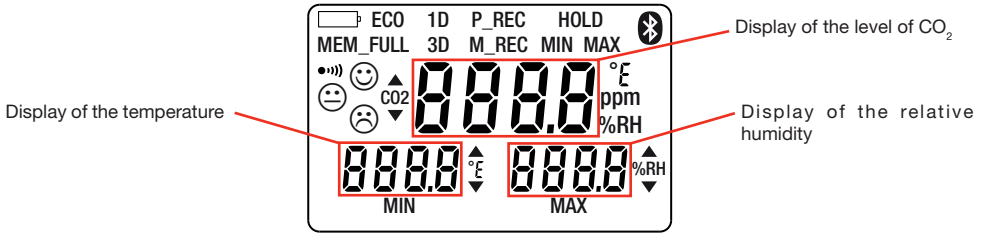
- **Short press:** 1D and/or 3D mode
- **Long press:** Change of temperature unit

- **Short press:** Hold of display
- **Long press:** Activation of Bluetooth link

MIN MAX function

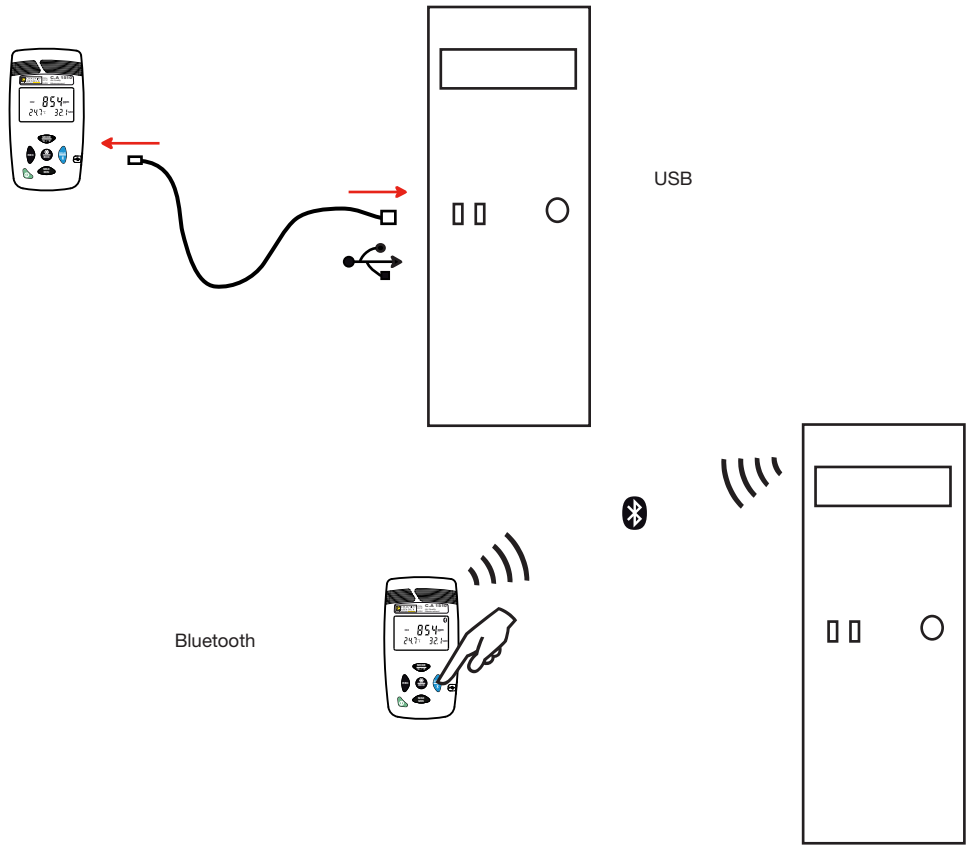
- **Short press:** Enter the MIN MAX function and display the various extreme values
- **Long press:** Exit from the MIN MAX function

DISPLAY UNIT

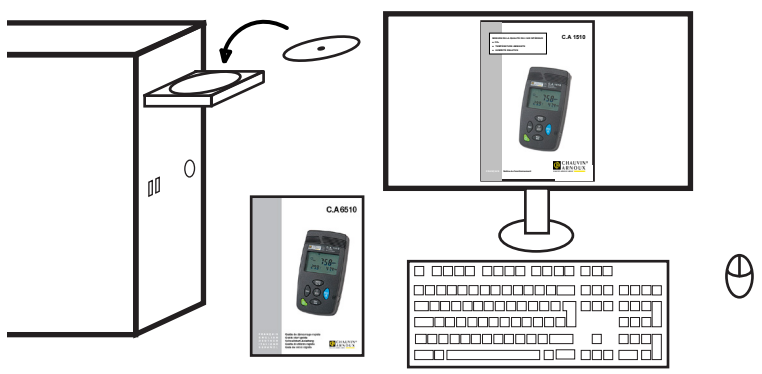


Symbol	Designation
MEM_FULL	Memory full
1D	Surveillance of the level of CO ₂
3D	Surveillance of crossing of the zone of comfort thresholds in CO ₂ , temperature, and relative humidity
MAX	Maximum value
MIN	Minimum value
ECO	Energy-saving operating mode
P_REC	Programmed recording Blinking: waiting to start recording Steady: recording
M_REC	Manual recording
HOLD	Hold of the display
MIN MAX	MIN MAX function: detection of minimum and maximum values
ppm	Unit of concentration of CO ₂ in the air: parts per million
●)))	Buzzer active
Bluetooth	Bluetooth Blinking: waiting for connection Steady: connected
Battery icon	Blinking: Batteries low Steady: Adapter or USB cord connected to external power supply.
▲	Overshoot of high threshold
▼	Overshoot of low threshold
😊 😐 😞	Indication of air quality and of the temperature/humidity zone of comfort

CONNECTING THE DEVICE TO A COMPUTER

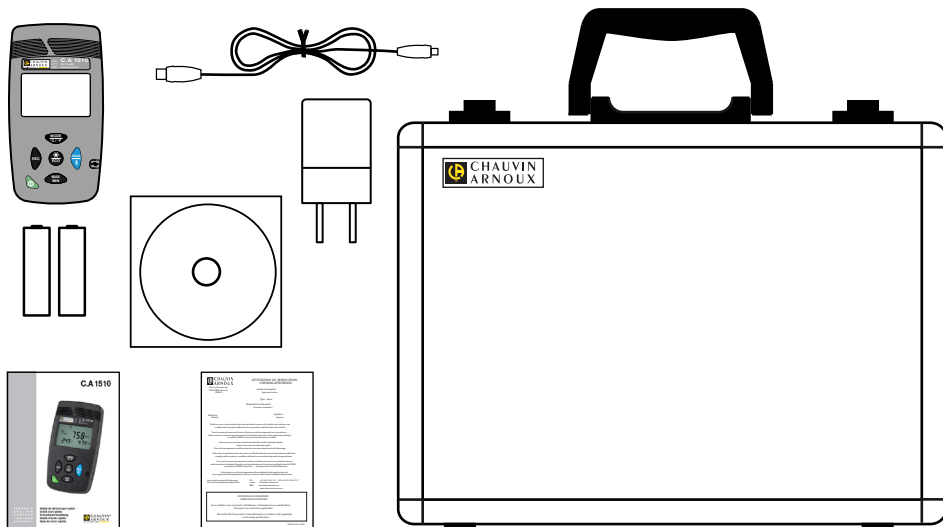


USER'S MANUAL

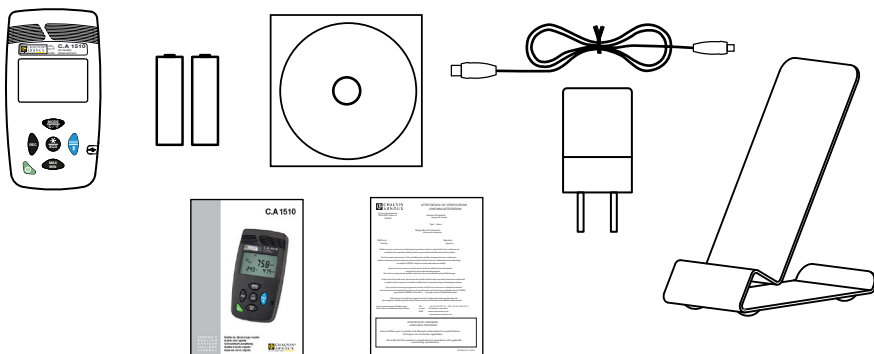


VERPACKUNGSIHALT

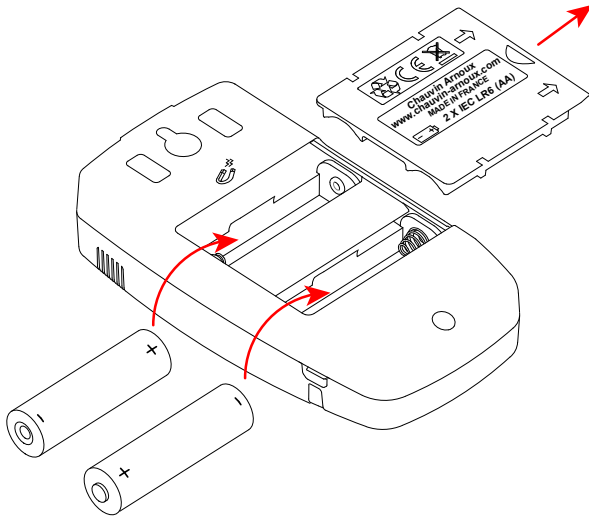
Anthrazitgraues



oder weißes Gerät



BATTERIEN EINLEGEN

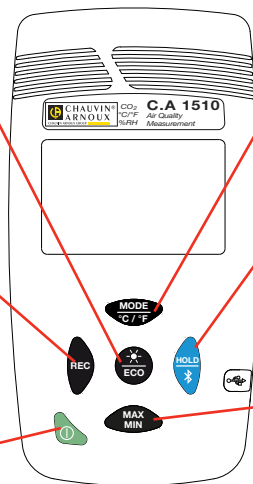


FUNKTIONSWEISE DER TASTEN

- **Kurz drücken:** Anzeigebeleuchtung
- **Gedrückt halten:** Energiesparmodus

Gedrückt halten: Manuelles Aufzeichnen (M_REC)

Ein/Aus



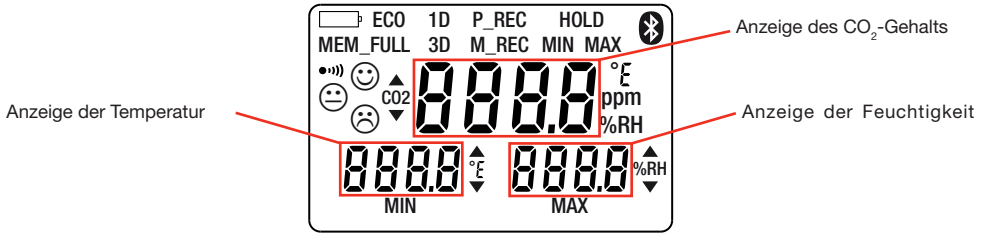
- **Kurz drücken:** 1D- und 3D-Modus
- **Gedrückt halten:** Wechseln der Temperatureinheit

- **Kurz drücken:** HOLD-Funktion
- **Gedrückt halten:** Bluetooth einschalten

Funktion MIN MAX

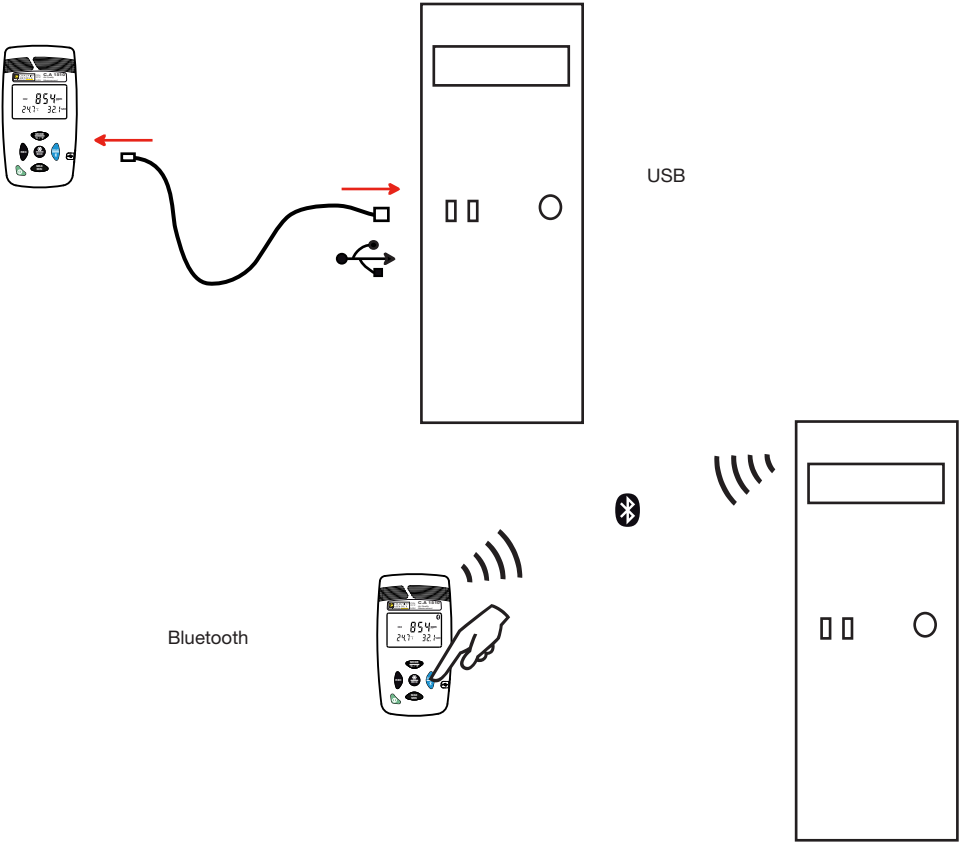
- **Kurz drücken:** MIN MAX-Funktion öffnen, Anzeige der verschiedenen Extremwerte
- **Gedrückt halten:** MIN MAX-Funktion verlassen

ANZEIGE

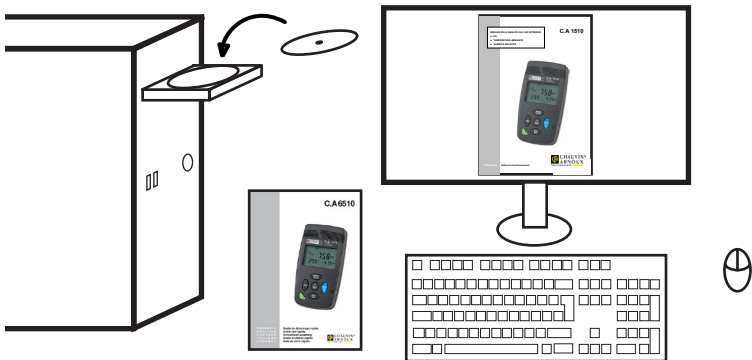


Symboles	Bezeichnung	
MEM_FULL	Speicher voll	
1D	Überwachung des CO ₂ -Gehalts	
3D	Überschreiten der Behaglichkeitsschwellen für CO ₂ , Temperatur und Feuchtigkeit	
MAX	Höchstwert	
MIN	Mindestwert	
ECO	Betrieb im Energiesparmodus	
P_REC	Programmierte Aufzeichnung	Blinkt: Aufzeichnung wird starten Leuchtet: Aufzeichnung läuft
M_REC	Manuelles Aufzeichnen	
HOLD	Messanzeige halten	
MIN MAX	MIN MAX-Funktion: Erfassung der Mindest- und Höchstwerte	
ppm	Einheit des CO ₂ -Gehalts der Luft in Millionstel Teilen (parts-per-million)	
●)))	Summer aktiv	
Bluetooth	Bluetooth	Blinkt: Verbindung wird aufgebaut Leuchtet: Verbindung ist hergestellt
Battery icon	Blinkt: Batterien sind schwach Leuchtet: Das Gerät ist an eine externe Versorgung angeschlossen (Adapter am Stromnetz bzw. USB-Anschluss).	
▲	Obergrenze ist überschritten	
▼	Untergrenze ist überschritten	
😊 😐 😞	Anzeige der Luftqualität und des hygrothermischen Wohlfühlbereichs	

DAS GERÄT MIT EINEM COMPUTER VERBINDEN

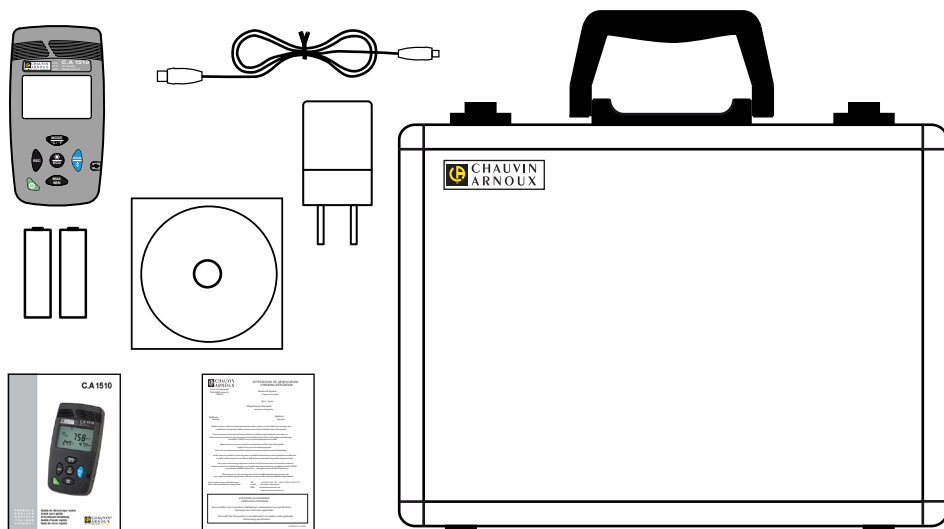


BEDIENUNGSANLEITUNG

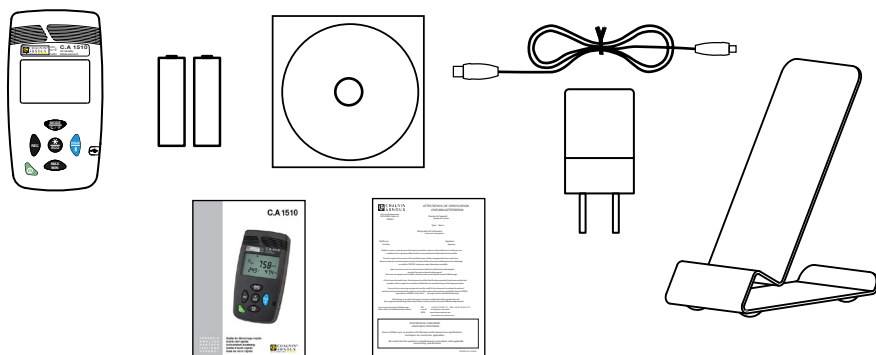


CARATTERISTICHE DI CONSEGNA

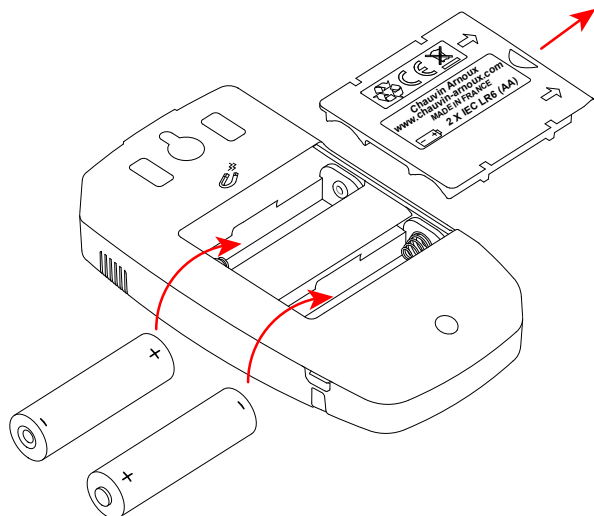
Strumento grigio antracite



o strumento bianco



INSERIMENTO DELLE PILE

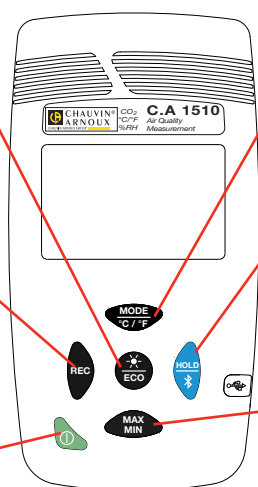


FUNZIONAMENTO DEI TASTI

- **Pressione breve:** Retroilluminazione
- **Pressione lunga:** Economia d'energia

Pressione lunga: Registrazione manuale (M_REC)

Marcia/Arresto



■ **Pressione breve:** Modo 1D e/o 3D

■ **Pressione lunga:** Cambio dell'unità di temperatura

■ **Pressione breve:** Mantenimento della visualizzazione

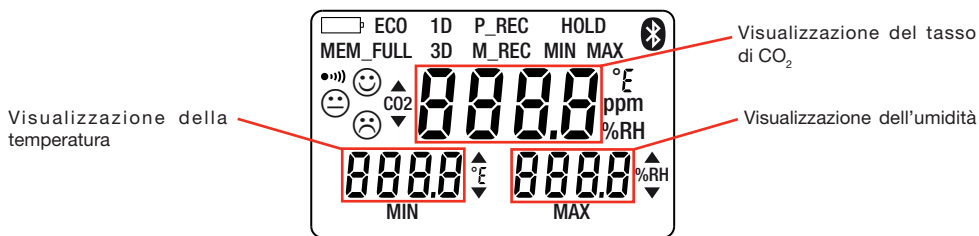
■ **Pressione lunga:** Attivazione del collegamento Bluetooth

Funzione MIN MAX

■ **Pressione breve:** Ingresso nella funzione MIN MAX e visualizzazione dei vari estremi

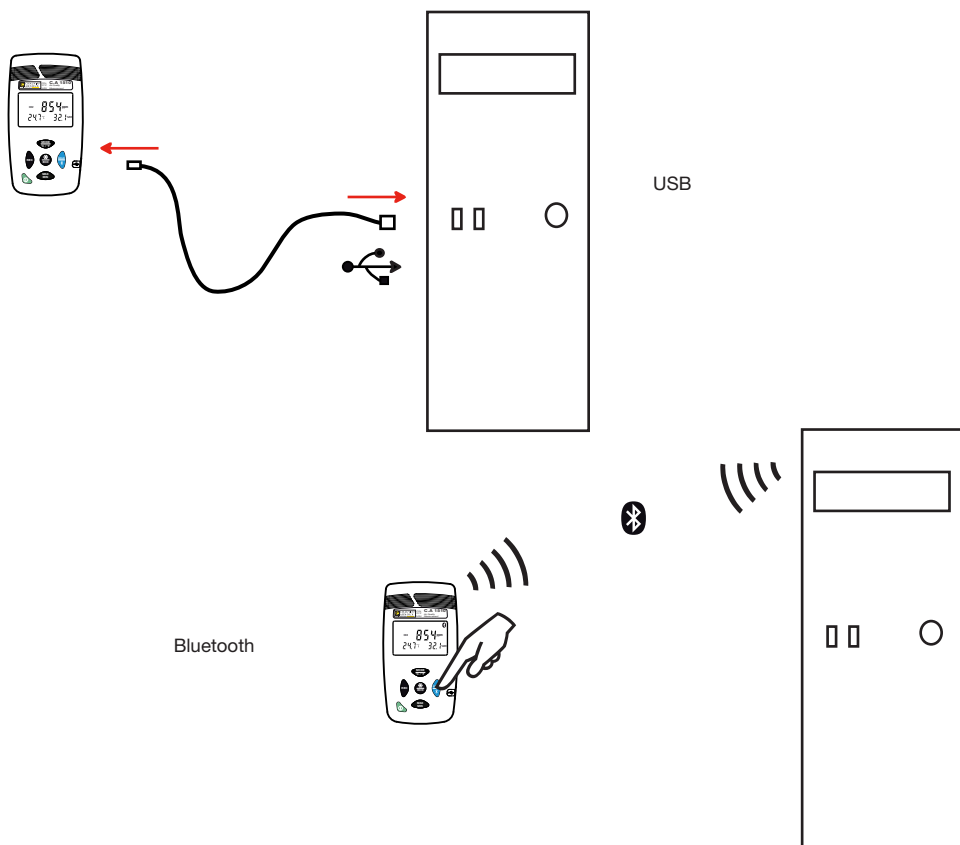
■ **Pressione lunga:** Uscita dalla funzione MIN MAX

VISUALIZZATORE

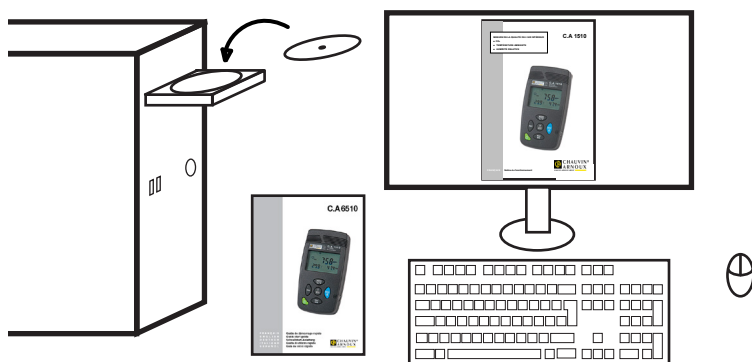


Simboli	Descrizione
MEM_FULL	Memoria satura
1D	Sorveglianza del tasso di CO ₂
3D	Sorveglianza del superamento delle soglie di zona di comfort in CO ₂ , temperatura e umidità
MAX	Valore massimo
MIN	Valore minimo
ECO	Modalità di funzionamento in economia d'energia
P_REC	Registrazione programmata Lampeggio: in attesa di avviare la registrazione Luce Fissa: in corso di registrazione
M_REC	Registrazione manuale
HOLD	Mantenimento della visualizzazione
MIN MAX	Funzione MIN MAX: rivelazione dei valori minimi e massimi
ppm	Unità della concentrazione di CO ₂ nell'aria in parti per milione
●)))	Buzzer attivo
Bluetooth	Bluetooth Lampeggio: in attesa di connessione Luce Fissa: collegato
☐	Lampeggio: Indicatore di pile deboli Luce Fissa: Indicatore di un'alimentazione esterna mediante allacciamento dell'adattatore rete o della connessione USB.
▲	Superamento di soglia alta
▼	Superamento di soglia bassa
😊 😐 😞	Indicazione della qualità dell'aria e della zona di comfort igrotermico

CONNESSIONE DELLO STRUMENTO AD UN COMPUTER

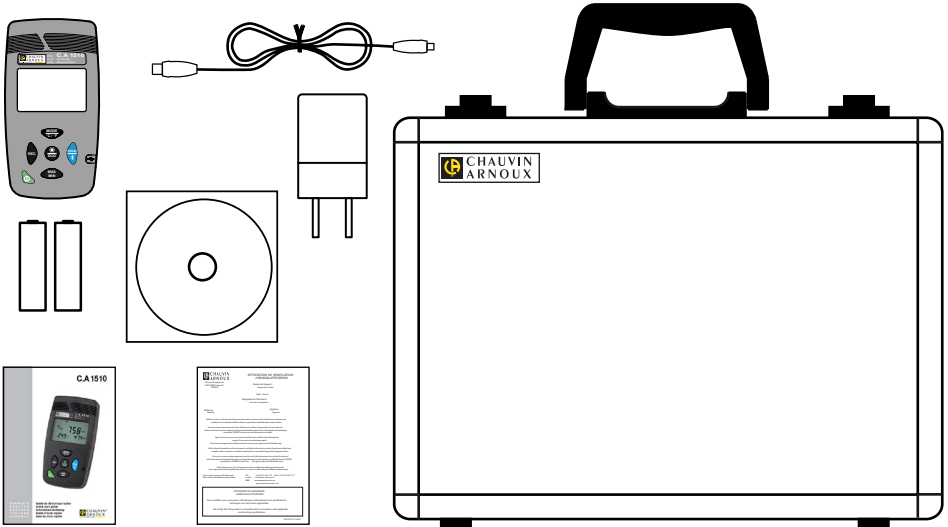


MANUALE D'USO

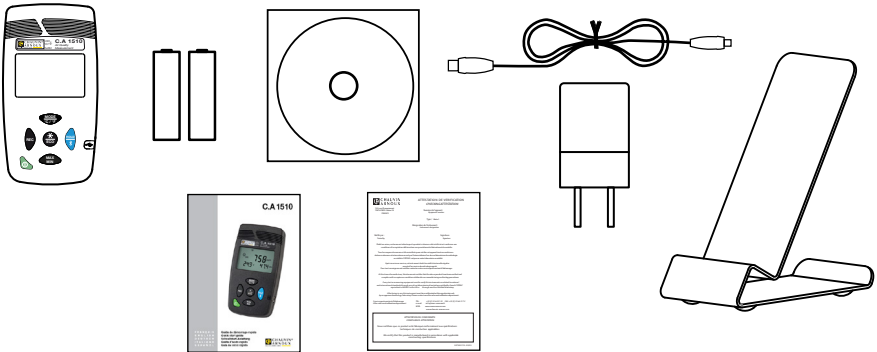


ESTADO DE SUMINISTRO

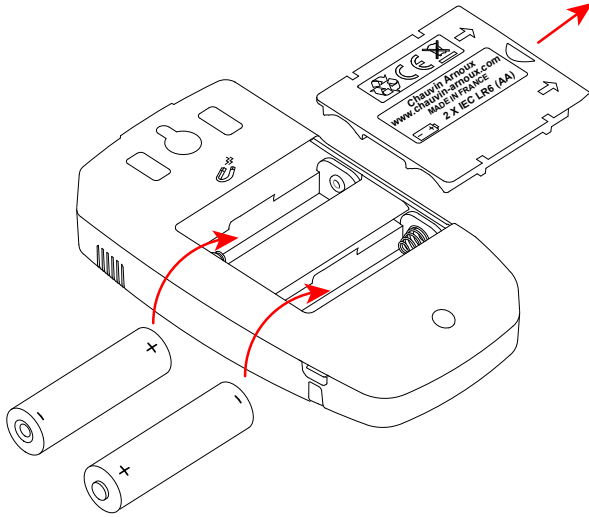
Instrumento gris antracita



o instrumento blanco



COLOCACIÓN DE LAS PILAS

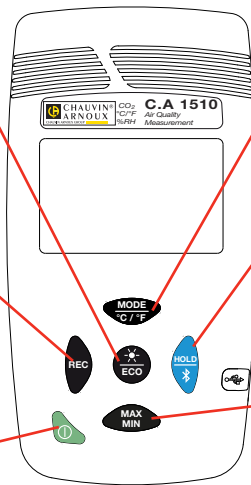


FUNCIONAMIENTO DE LAS TECLAS

- Pulsación corta: Retroiluminación
- Pulsación larga: Ahorro de energía

Pulsación larga: Registro manual (M_REC)

Encendido/Apagado



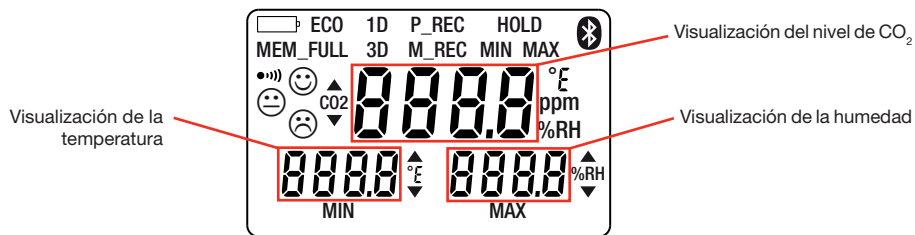
- Pulsación corta: Modo 1D y/o 3D
- Pulsación larga: Cambio de la unidad de temperatura

- Pulsación corta: Congelación de la visualización
- Pulsación larga: Activación de la conexión Bluetooth

FUNCIÓN MÍN. MÁX.

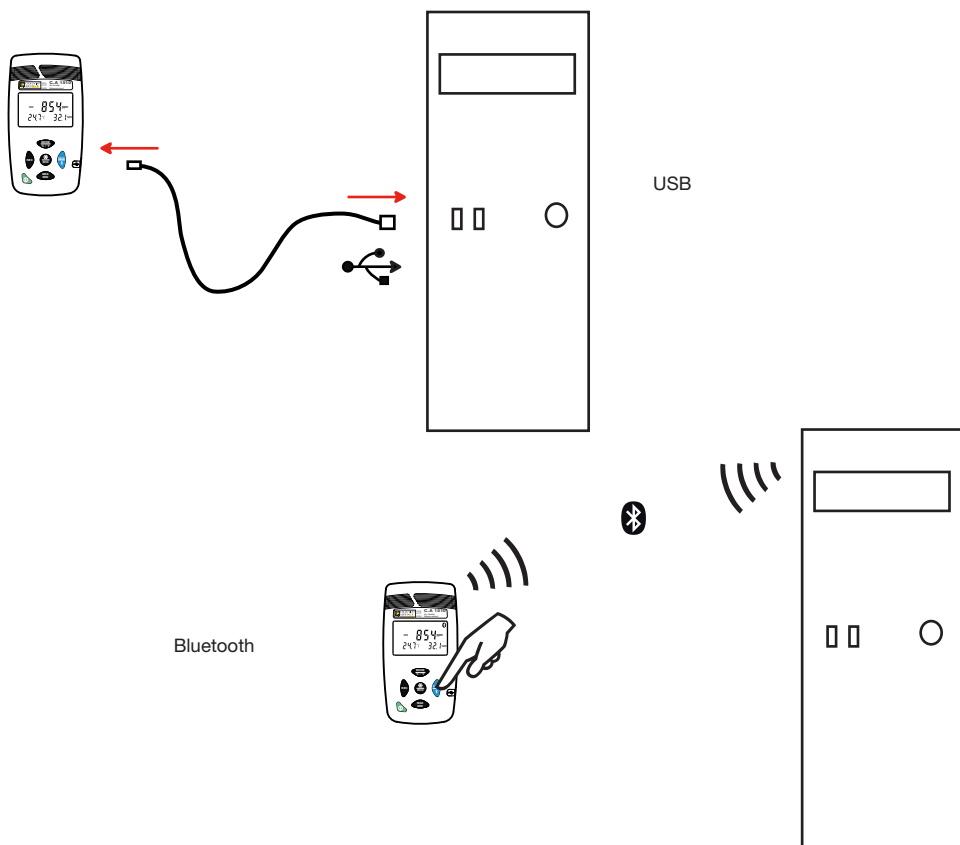
- Pulsación corta: Entrada en la función MÍN. MÁX. y visualización de los distintos extremos
- Pulsación larga: Salida de la función MÍN. MÁX.

PANTALLA

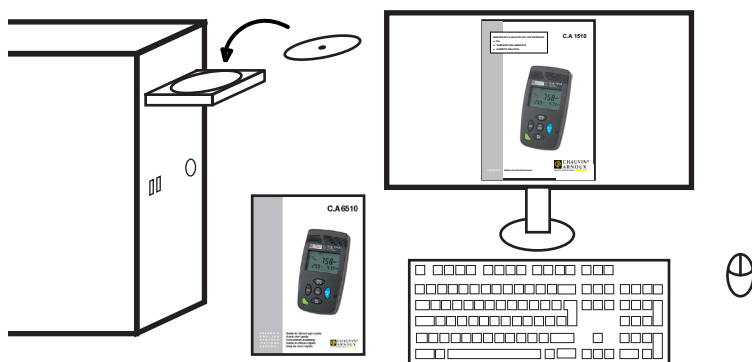


Símbolos	Descripción
MEM_FULL	Memoria llena
1D	Vigilancia del nivel de CO ₂
3D	Vigilancia del rebasamiento de los umbrales de zona de confort en CO ₂ , temperatura y humedad
MAX	Valor máximo
MIN	Valor mínimo
ECO	Modo de funcionamiento en ahorro de energía
P_REC	Registro programado Parpadeando: esperando el inicio del registro Fijo: registrando
M_REC	Registro manual
HOLD	Congelación de la visualización
MIN MAX	Función MÍN. MÁX.: detección de los valores mínimos y máximos
ppm	Unidad de la concentración de CO ₂ en el aire en partes por millón
●)))	Zumbador activo Parpadeando: esperando la conexión Fijo: conectado
	Bluetooth
	Parpadeando: indicador de pilas bajas. Fijo: indicador de una alimentación externa por conexión de la fuente de alimentación o de la conexión USB.
▲	Rebasamiento de umbral alto
▼	Rebasamiento de umbral bajo
😊 😐 😞	Indicación de la calidad del aire y de la zona de confort higrotérmica

CONEXIÓN DEL INSTRUMENTO A UN ORDENADOR



MANUAL DE INSTRUCCIONES





04 - 2014

Code 694279A00 - Ed. 1

DEUTSCHLAND - Chauvin Arnoux GmbH

Straßburger Str. 34 - 77694 Kehl / Rhein
Tel: (07851) 99 26-0 - Fax: (07851) 99 26-60

ESPAÑA - Chauvin Arnoux Ibérica S.A.

C/ Roger de Flor N° 293, Planta 1- 08025 Barcelona
Tel: 902 20 22 26 - Fax: 934 59 14 43

ITALIA - Amra SpA

Via Sant' Ambrogio, 23/25 - 20050 Macherio (MI)
Tel: 039 245 75 45 - Fax: 039 481 561

ÖSTERREICH - Chauvin Arnoux Ges.m.b.H

Slamastrasse 29/2/4 - 1230 Wien
Tel: 01 61 61 961-0 - Fax: 01 61 61 961-61

SCANDINAVIA - CA Mätssystem AB

Box 4501 - SE 18304 TÄBY
Tel: +46 8 50 52 68 00 - Fax: +46 8 50 52 68 10

SCHWEIZ - Chauvin Arnoux AG

Moosacherstrasse 15 - 8804 AU / ZH
Tel: 044 727 75 55 - Fax: 044 727 75 56

UNITED KINGDOM - Chauvin Arnoux Ltd

Unit 1 Nelson Ct - Flagship Sq - Shaw Cross Business Pk
Dewsbury, West Yorkshire - WF12 7TH
Tel: 01924 460 494 - Fax: 01924 455 328

MIDDLE EAST - Chauvin Arnoux Middle East

P.O. BOX 60-154 - 1241 2020 JAL EL DIB (Beirut) - LEBANON
Tel: (01) 890 425 - Fax: (01) 890 424

CHINA - Shanghai Pu-Jiang - Enerdis Instruments Co. Ltd

3 F, 3 rd Building - N° 381 Xiang De Road - 200081 SHANGHAI
Tel: +86 21 65 21 51 96 - Fax: +86 21 65 21 61 07

USA - Chauvin Arnoux Inc - d.b.a AEMC Instruments

200 Foxborough Blvd. - Foxborough - MA 02035
Tel: (508) 698-2115 - Fax: (508) 698-2118

<http://www.chauvin-arnoux.com>

190, rue Championnet - 75876 PARIS Cedex 18 - FRANCE

Tél. : +33 1 44 85 44 85 - Fax : +33 1 46 27 73 89 - info@chauvin-arnoux.fr

Export : Tél. : +33 1 44 85 44 86 - Fax : +33 1 46 27 95 59 - export@chauvin-arnoux.fr